

James L. Goodwin State Forest



James L. Goodwin State Forest
&
Conservation Education Center
www.ct.gov/dep/Goodwin

The Goodwin State Forest and Conservation Education Center were gifts to the people of Connecticut from James L. Goodwin, one of America's first professional foresters. Together they include 2,000 acres of forests and habitats, 14 miles of trails, 3 large ponds, a native plant wildlife garden and a nature museum. The Goodwin State Forest is managed by the Connecticut Department of Energy & Environmental Protection (DEEP) Division of Forestry. The Goodwin Conservation Education Center, located at 23 Potter Road in Hampton, is managed jointly by the DEEP Division of Parks and the Connecticut Forest & Park Association. The Center's mission is to provide forestry, wildlife and general conservation education to youth and adults.

Friends of Goodwin Forest



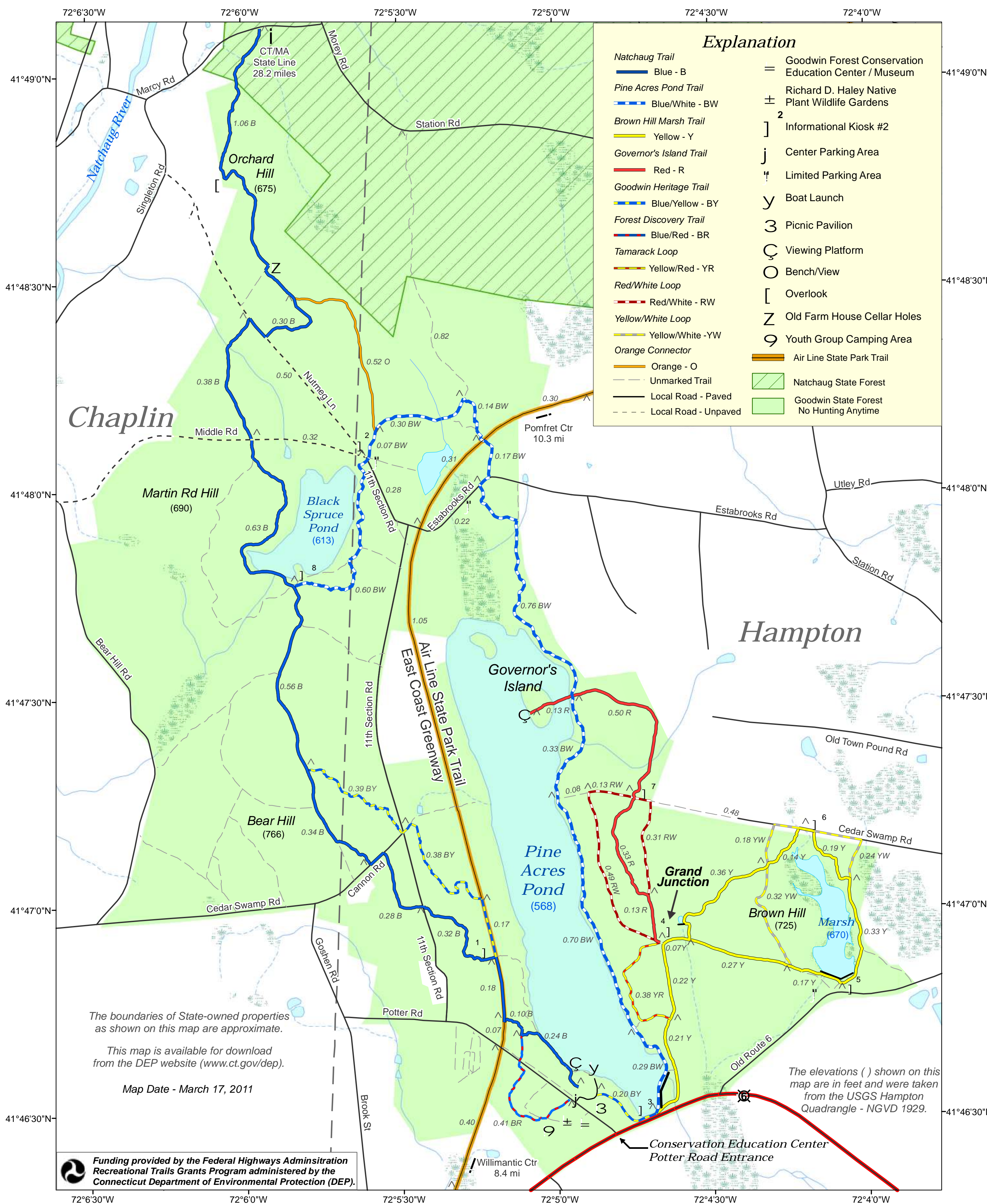
The FGF is a volunteer, non-profit support group affiliated with the Connecticut Forest and Park Association. The Friends support the Center and Forest in a wide variety of ways, including trail, garden and grounds management, fund raising and outreach. For more information or to become a Friend contact (860) 455-9534 or sbroderick@ctwoodlands.org



The Connecticut Forest and Park Association is a non-profit, member based conservation organization whose mission is to connect people to the land, to protect forests, parks, walking trails and open spaces for future generations. To learn more visit www.ctwoodlands.org or call 860-346-TREE.

Trail Use/Leave No Trace Guidelines

- Park in designated areas only.
- Stay on marked trails
- Respect other users.
- Carry out what you carry in.
- Do not cut or collect living plants.
- Help protect all natural and cultural resources.
- Keep your pet under control.
- No fires allowed.



The Blue-Blazed Natchaug Trail is foot travel only. All other trails at Goodwin State Forest are non-motorized multi-use trails.

